



# CorePro LEDtube InstantFit HF T5



## CorePro LEDtube HF 1200mm HE 17.1W 865T5

LED, T5, HF, 1200 mm, 17.1 W, 28W TL5 HE, 6500 K, 2500 lm, CRI 80, 50000 hour(s)

CorePro LEDtube InstantFit HF T5 is the quick and easy way to replace T5 fluorescent tubes with a fast payback time. Designed with industry leading ballast compatibility, the product is ideal for your everyday lighting jobs. With simply plug-and-play installation, it improves energy efficiency immediately and lasts for longer than conventional T5.

### Product data

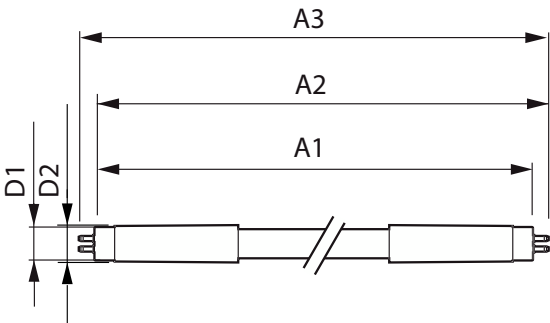
General Information		Color rendering index (CRI)	
Cap-Base	G5		80
Nominal lifetime	50,000 hour(s)	LLMF At End Of Nominal Lifetime (Nom)	70 %
Switching Cycle	50,000	Photobiological safety according to EN 62471	RG0
Lighting Technology	LED	Operating and Electrical	
Flux measurement reference	Sphere	Input Frequency	30K to 100K Hz
Warranty period	3 years	Power Consumption	17.1 W
Light Technical		Lamp Current (Max)	350 mA
Color Code	865 [CCT of 6500K]	Lamp Current (Min)	150 mA
Beam Angle (Nom)	200 degree(s)	Starting Time (Nom)	0.5 s
Luminous Flux	2,500 lm	Warm-up time to 60% light	0.5 s
Color Designation	Cool Daylight	Power Factor (Fraction)	0.9
Correlated Color Temperature (Nom)	6500 K	Voltage (Nom)	70-120 V
Luminous Efficacy (rated) (Nom)	146 lm/W	LED alternative to fluorescent lamp power	28W TL5 HE
Color Consistency	<6	Inrush current at mains	-
		Max. lamp no. on MCB B type 10A - Mains	-

CorePro LEDtube InstantFit HF T5

Max. lamp no. on MCB B type 10A – EM ballast without Compensation Capacitor.	-
Max. lamp no. on MCB B type 10A – EM ballast with Compensation Capacitor.	-
Max. lamp no. on MCB B type 16A – Mains	-
Max. lamp no. on MCB B type 16A – EM ballast without Compensation Capacitor.	-
Max. lamp no. on MCB B type 16A – EM ballast with Compensation Capacitor.	-
Ballast Compatibility	HF
Temperature	
T-Case Maximum (Nom)	45 °C
Controls and Dimming	
Dimmable	No
Mechanical and Housing	
Bulb Finish	Frosted
Bulb Material	Glass
Product Length	1,200 mm
Bulb Shape	T5
Net Weight (Piece)	0.160 kg
Approval and Application	
Energy Efficiency Class	D

Energy Saving Product	Yes
Approval Marks	RoHS compliance KEMA Keur certificate
Energy Consumption kWh/1000 h	18 kWh
EPREL Registration Number	1880100
CE mark	Yes
EU RoHS compliant	Yes
Ambient temperature range	-20 to +45 °C
Product Data	
Order product name	CorePro LEDtube HF 1200mm HE 17.1W 865T5
Full product name	CorePro LEDtube HF 1200mm HE 17.1W 865T5
Full product code	872016929550600
Order code	929003774602
Material Nr. (12NC)	929003774602
Numerator - Quantity Per Pack	1
EAN/UPC - Product/Case	8720169295506
Numerator - Packs per outer box	10
EAN/UPC - Case	8720169295513

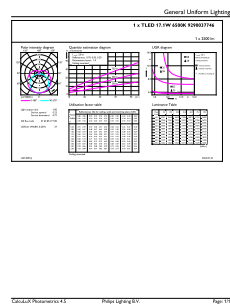
Dimensional drawing



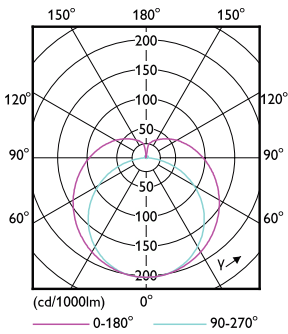
Product	D1	D2	A1	A2	A3
CorePro LEDtube HF 1200mm HE 17.1W 865T5	15.5 mm	16/19 mm	1,149 mm	1,156 mm	1,163 mm

# CorePro LEDtube InstantFit HF T5

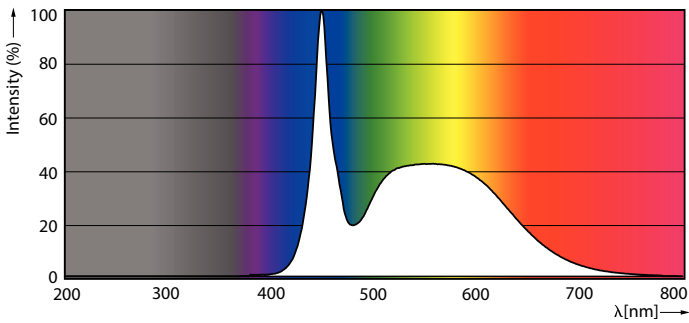
## Photometric data



General uniform lighting - CorePro LEDtube HF 1200mm HE 17.1W 865T5

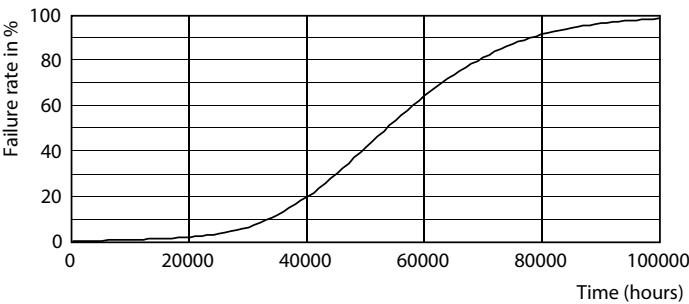


Light Distribution Diagram - CorePro LEDtube HF 1200mm HE 17.1W 865T5

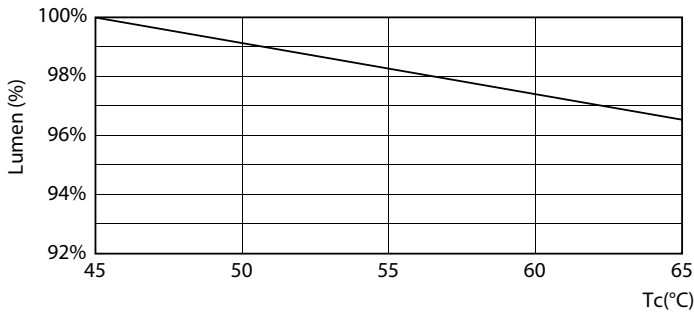


Spectral Power Distribution Colour - CorePro LEDtube HF 1200mm HE 17.1W 865T5

## Lifetime



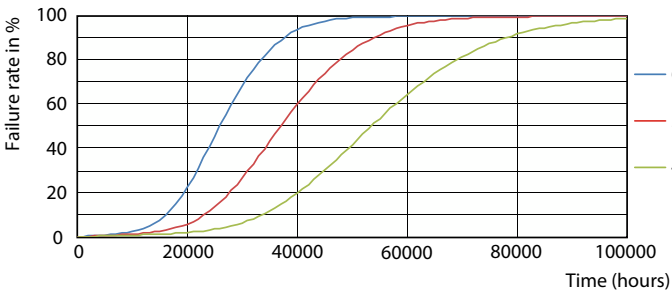
Life Expectancy Diagram



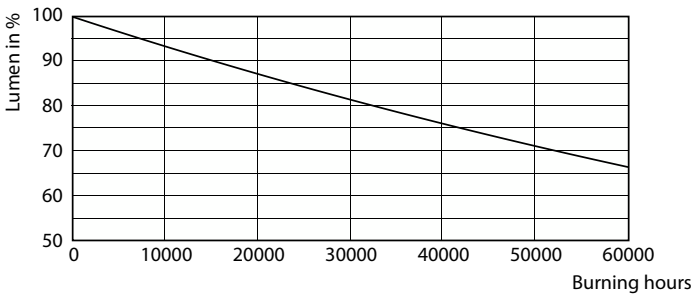
Lumen Maintenance Diagram - CorePro LEDtube HF 1200mm HE 17.1W 865T5

CorePro LEDtube InstantFit HF T5

Lifetime



FailureRate



LifetimeVsTc

Lumen Maintenance Diagram - CorePro LEDtube HF 1200mm HE 17.1W 865T5

